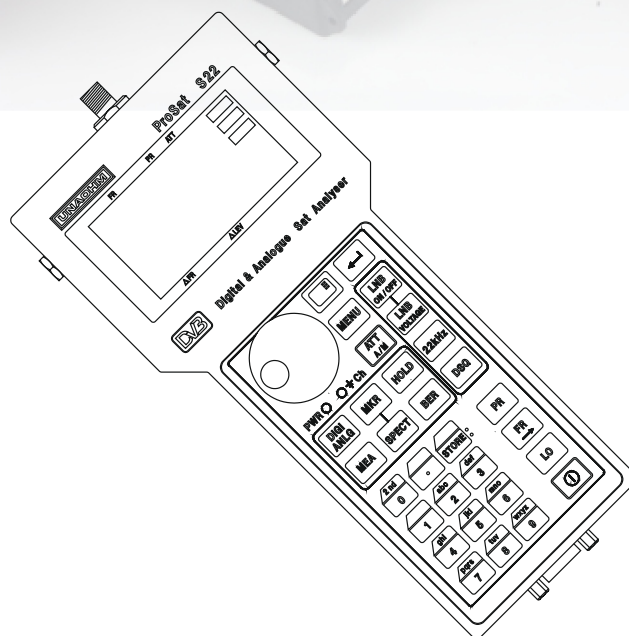




UNAOHM START S.r.l.

Remote Control Software RSWS22 for S 22



UNAOHM

INDICE

1. GENERAL INFORMATION	2
1.1. FLOPPY DISK CONTENT	2
1.2. MINIMUM SYSTEM REQUIREMENTS.....	2
2. PROGRAM INSTALLATION	2
3. START UP OF RSWS22_01 PROGRAM	5
4. RS232 PORT SELECTION	5
5. PROGRAM SETUP	6
6. DATA MANAGEMENT	7
7. INSTRUMENT CONFIGURATION	9
8. CLOSING WINDOWS.....	9
9. APPENDIX: LIST OF FIGURES.....	9

Unaohm Start S.r.l. reserve the right to change product specifications at any moment and without notice, regardless of whether the change is of technical or commercial nature or being implemented to comply with legal requirements of specific countries.

Data in this manual, therefore, may not be up-to-date.

1. GENERAL INFORMATION

The RSWS22 remote control software is a driver for programs which are an integral part of this field strength meter. In order to use this software, the meter must be up-dated to at least the S2.0 software release.

1.1. FLOPPY DISK CONTENT

The following files are included in the floppy disks (or CD):

- RswS221.cab cabinet file;
- RswS222.cab cabinet file;
- RswS223.cab cabinet file;
- Setup.exe installation file;
- Setup.lst configuration file to installation;
- Instruction manual.pdf instructions for the installation of, and how to use this program.

1.2. MINIMUM SYSTEM REQUIREMENTS

The minimum system requirements are as follows:

- An IBM PC or any PC compatible with a Pentium[®] microprocessor, with a clock speed the same as, or higher than, 120 MHz, 10 Mbytes free room on a hard disk.
- System memory (RAM): 32 Mbytes.
- Windows95[®], Windows98[®].
- A VGA 14" monitor.
- A keyboard.
- A 3"1/2 floppy disk reader.
- A CD ROM reader.
- A 2-3 button mouse (Microsoft Windows compatible).
- An RS232 serial port for data exchange with the instrument.

2. PROGRAM INSTALLATION

To start installing the program copy the content of the disks provided, in a directory of your choice (for example *c:\temp*), then select : **Start** → **Eseguì**.

On the keyboard key in *c:\temp\setup.exe* in the specific field of the Run window, then press **OK**. Should the driver identifying letter be different from "c", replace it with the appropriate one assigned by the system.

If there are any programs open, we suggest you close all active applications before continuing with the installation, by pressing **OK** again, as per Figure 1. Besides, should you find it impossible to install the program from the start, it may become useful to set your PC to Italian (or Italian standard) through the International Setting routing (*Start, Settings, Control panel, International -or Regional- settings, Italian, Restart your computer*).

UNAOHM

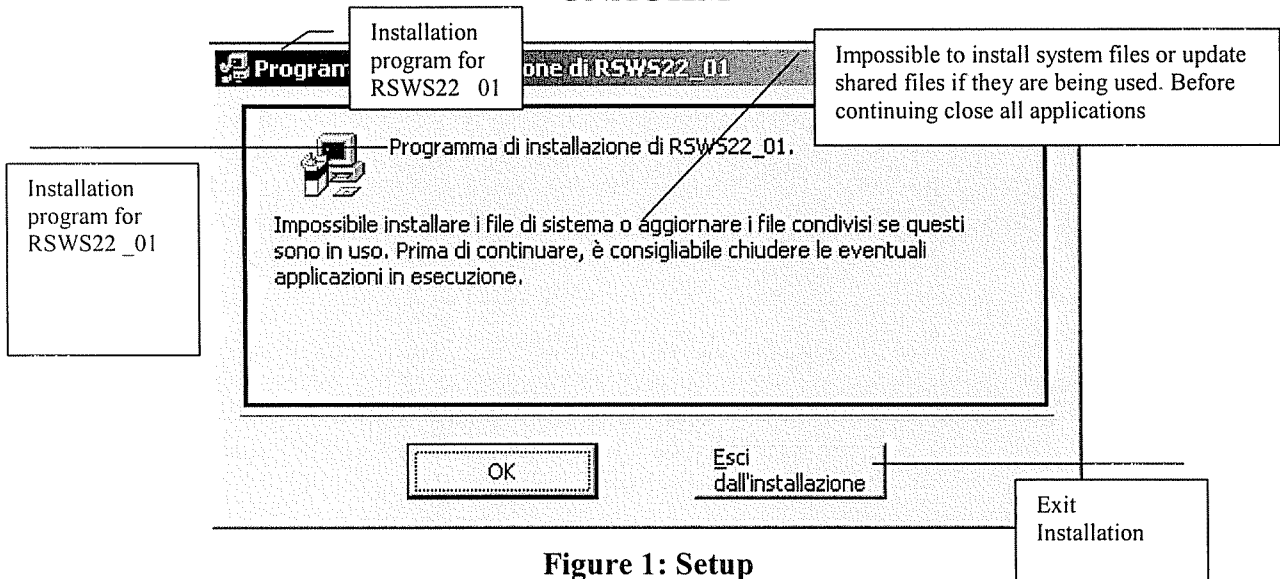


Figure 1: Setup

The installation program is automatic. For every operation a confirmation is requested, which should be given pressing **Continua** (Continue). Progressing orderly, you are asked to press the installation button to copy programs from the directory of your choice to the directory of destination; although you have a preset routing for copying, which is found in **c:\Programmi\RSWS22_01**, this can always be changed, as illustrated on the display (or window) of Figure 2.

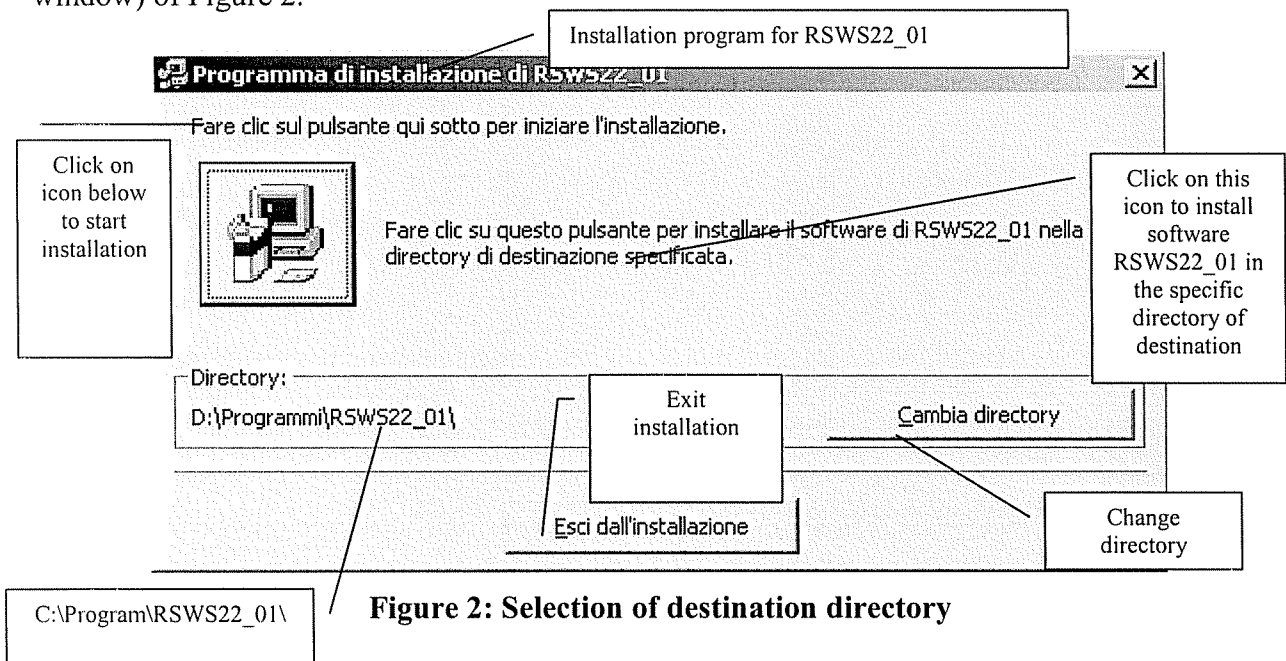


Figure 2: Selection of destination directory

Afterwards a group is formed of elements inside the program group: the name of the program group can be changed at will, as per display on Figure 3.

UNAOHM

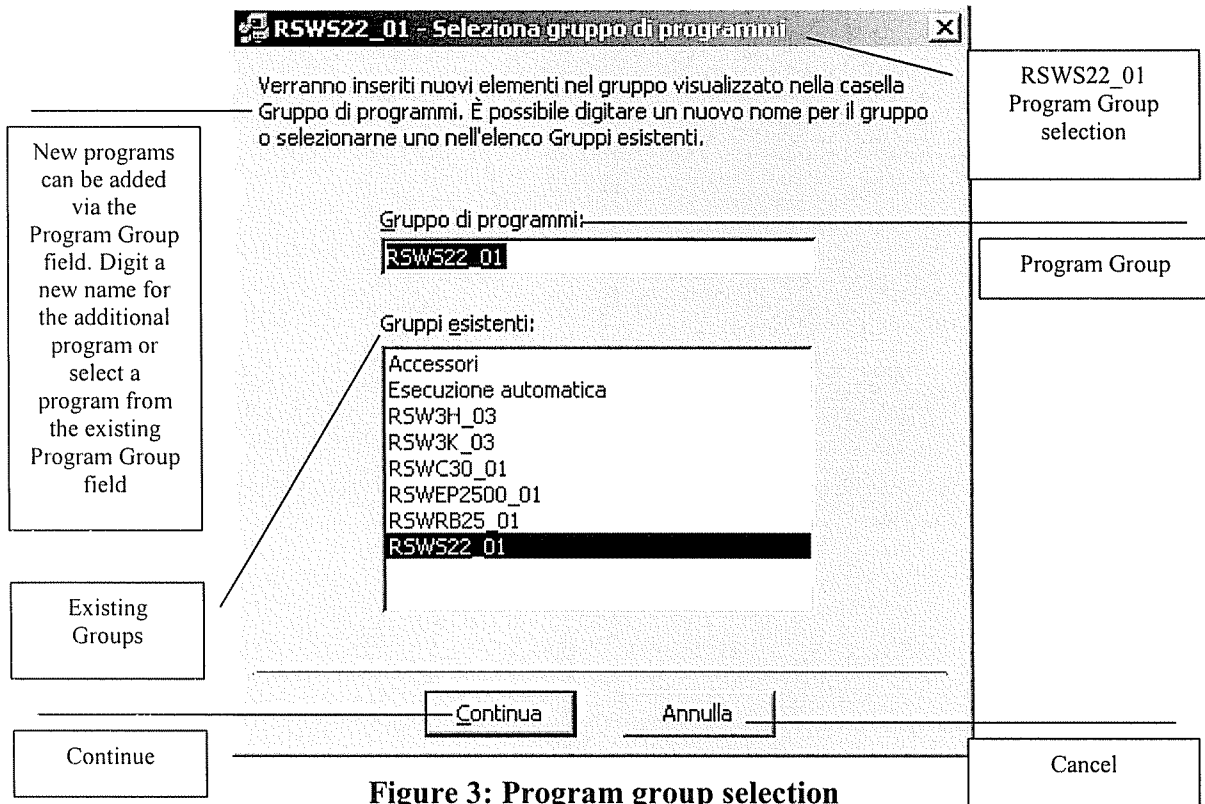


Figure 3: Program group selection

An installation status bar shows you the progress being achieved in copying files (see Figure 4). At this stage you can always stop the installation pressing **Annulla** (*Cancel*) or **Esci dall'installazione** (*Exit the installation*); an automatic procedure will remove all copied files in that case.

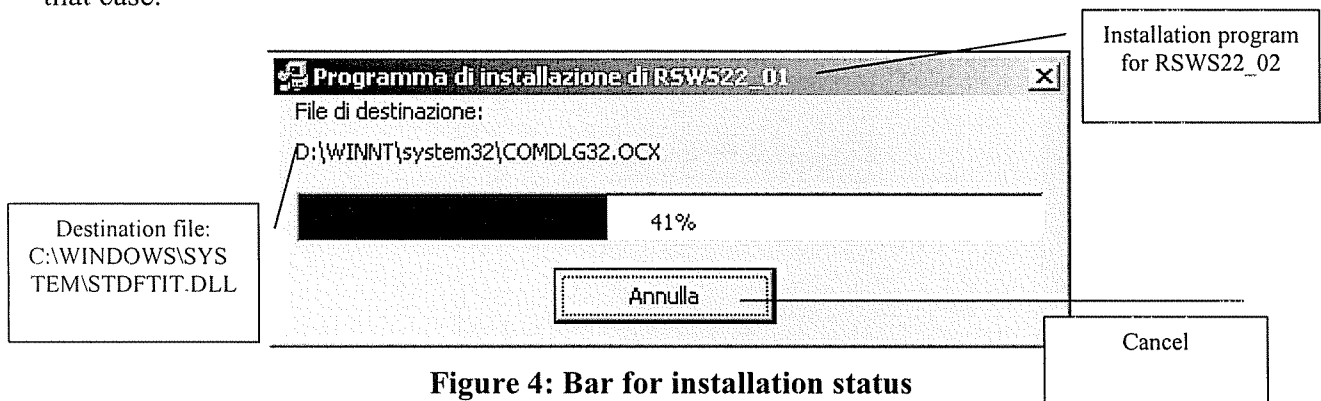


Figure 4: Bar for installation status

At the end of the installation process a window is displayed to confirm the successful ending of the copying process (see Figure 5). Press **OK**, to exit the installation process completely.

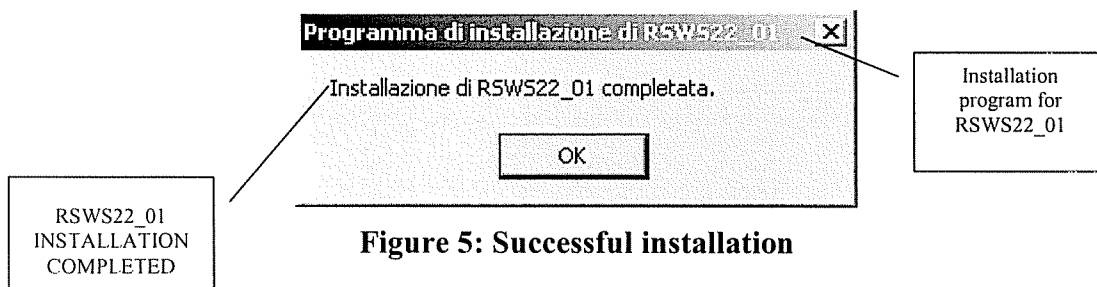


Figure 5: Successful installation

3. START UP OF RSWS22_01 PROGRAM

Connect the RS232 port of the PC to the instrument via a serial cord. Switch the instrument on, then the PC. Start up the programme as follows:

Select: **Start** → **Programmi** → **RSWS22_01** → **RSWS22_01**. The main configuration window will appear on the PC monitor, as per Figure 6.

The application can be split in three main parts: program setting and data capture management and instrument real time function setting.

Starting the application, a control bar shows the tabs which allow access to the different sections of the program. Scrolling the tabs with the cursor shows a short description of the function each tab activates whenever pressed.

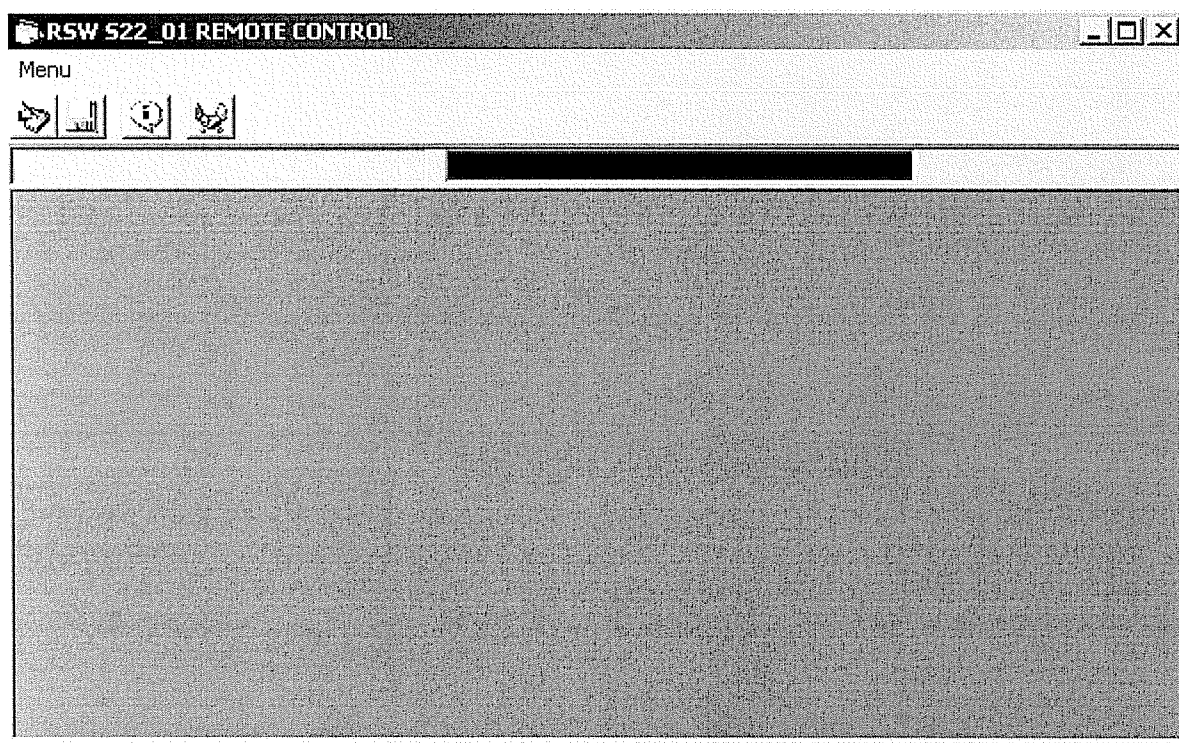


Figure 6: Main display

4. RS232 PORT SELECTION

In this section it is possible to select the serial port of the PC connected to the instrument.

The display on Figure 7 shows the configuration that the instrument must have to use the application.

If the connection is correct the writing "*RS232 ComPort Connected*" is displayed.

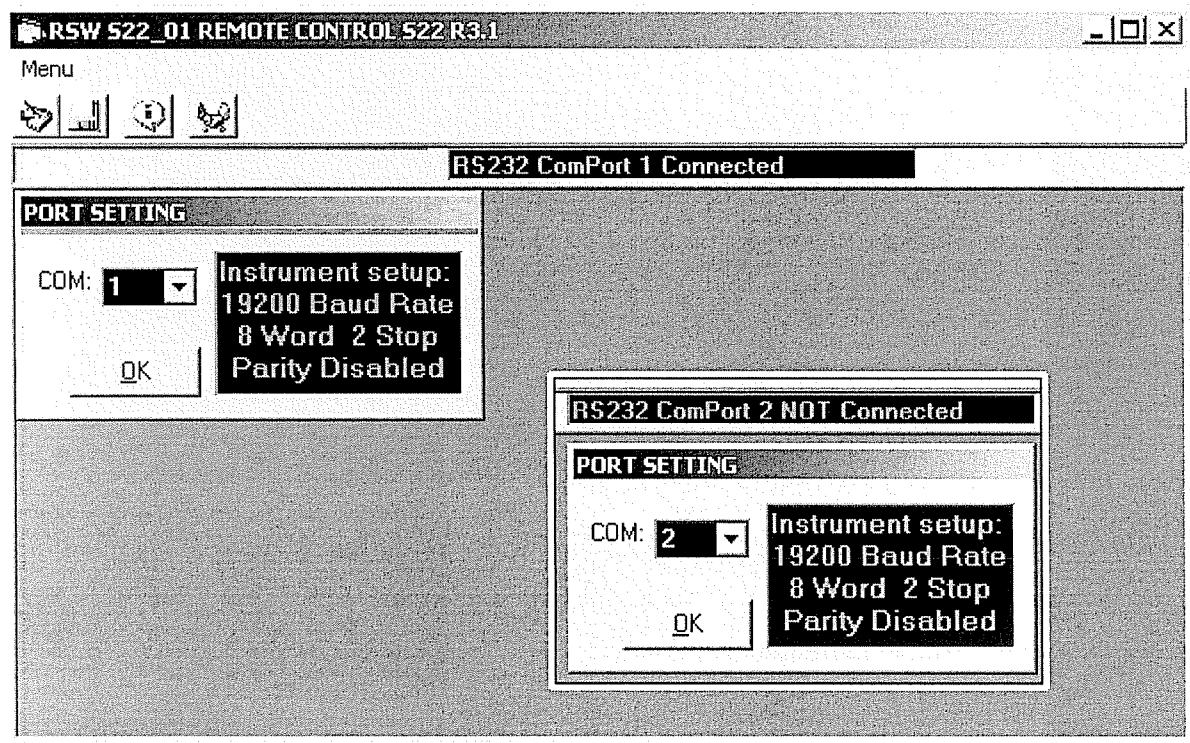


Figure 7: Serial port setting

5. PROGRAM SETUP

This section makes it possible to create a large number of program groups (the maximum number depends on the individual capabilities of the PC), which may be identified by name up to a maximum of 100 elements each. The command bar related to this section, see Figure 8, includes the following functions:

- *Move to Previous Group*: displays the first element of the previous group.
- *Move to Next Group*: displays the first element of the following group.
- *Create New Group*: creates a new group of programs to which an identification edited in the "Group Name" box must be associated, which is visible in the window in use.
- *Delete Group*: eliminates the current group from the PC memory. Confirmation of the operation is previously requested.
- *New Programme*: creates a new program in the group selected.
- *Update Programme*: replaces the selected program with the new configuration edited.
- *Delete Programme from Group*: eliminates the selected program from the group currently engaged. Confirmation of the operation is requested previously. In the group at last one program remains which may be deleted by deleting the entire group only.
- *Move to Previous Programme*: displays the previous program of the selected group.
- *Move to Next Programme*: displays the following program of the group selected.
- *Transmit Group's Programmes*: carries out the transfer from the PC to the instrument of the programs created and associated to the program in use at the moment. Obviously the instrument must be connected to a serial port of the PC and this port must be open (see paragraph 4).

UNAOHM

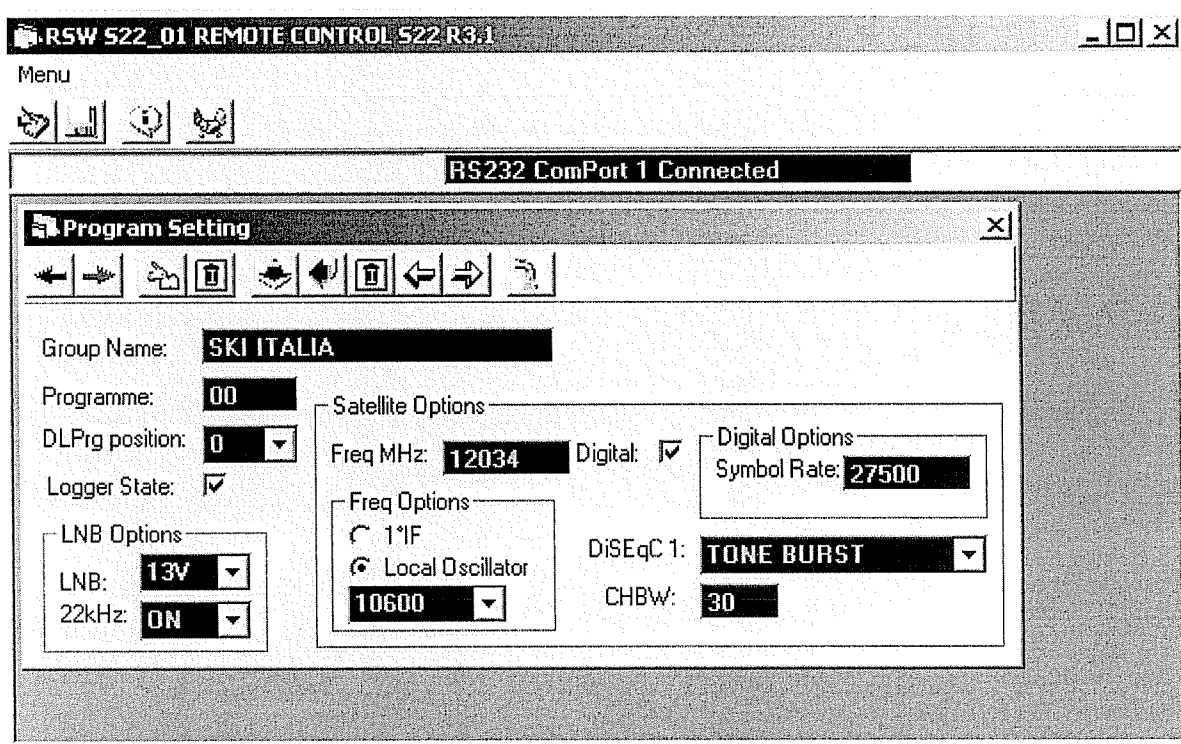


Figure 8: Program Setup

The application makes it possible to create both analogue and digital QPSK programmes for the Satellite section. To preset some parameters it is necessary to insert a numerical value in the associated field, for others it is only necessary to scroll the bar related to the field in order to display the possible values that the parameter may assume. Subsequently, it is necessary to confirm the value selected by clicking on the field: the field selected will change colour indicating it has been confirmed.

You can assign a position to each program in the Data Logger program table (*DLPrG Position*), and you can set power to the LNB and activate the 22kHz tone.

You can also select one of the local oscillators set in the instrument and change it, key in the frequency, a DiSEqC command and the bandwidth for digital channel power measurement.

6. DATA MANAGEMENT

This section makes it possible to process Data Logger acquisitions. The following functions are available as shown in Figure 9.

- *Start Log*: the capture of Data Logger user defined programmes is started.
- *Download*: the data captured and stored by the Data Logger are displayed in the window.
- *Download Last*: the data pertaining to the last capture and stored by the Data Logger are displayed in the window.
- *Clear Last*: cancels last data capture.
- *Clear All*: cancels all data captures.

The captured data may be stored in a file by clicking on the key "Save file" on the command bar. It is possible to load a stored file by means of the key "Open file" and delete it by means of the key "Delete file".

UNAOHM

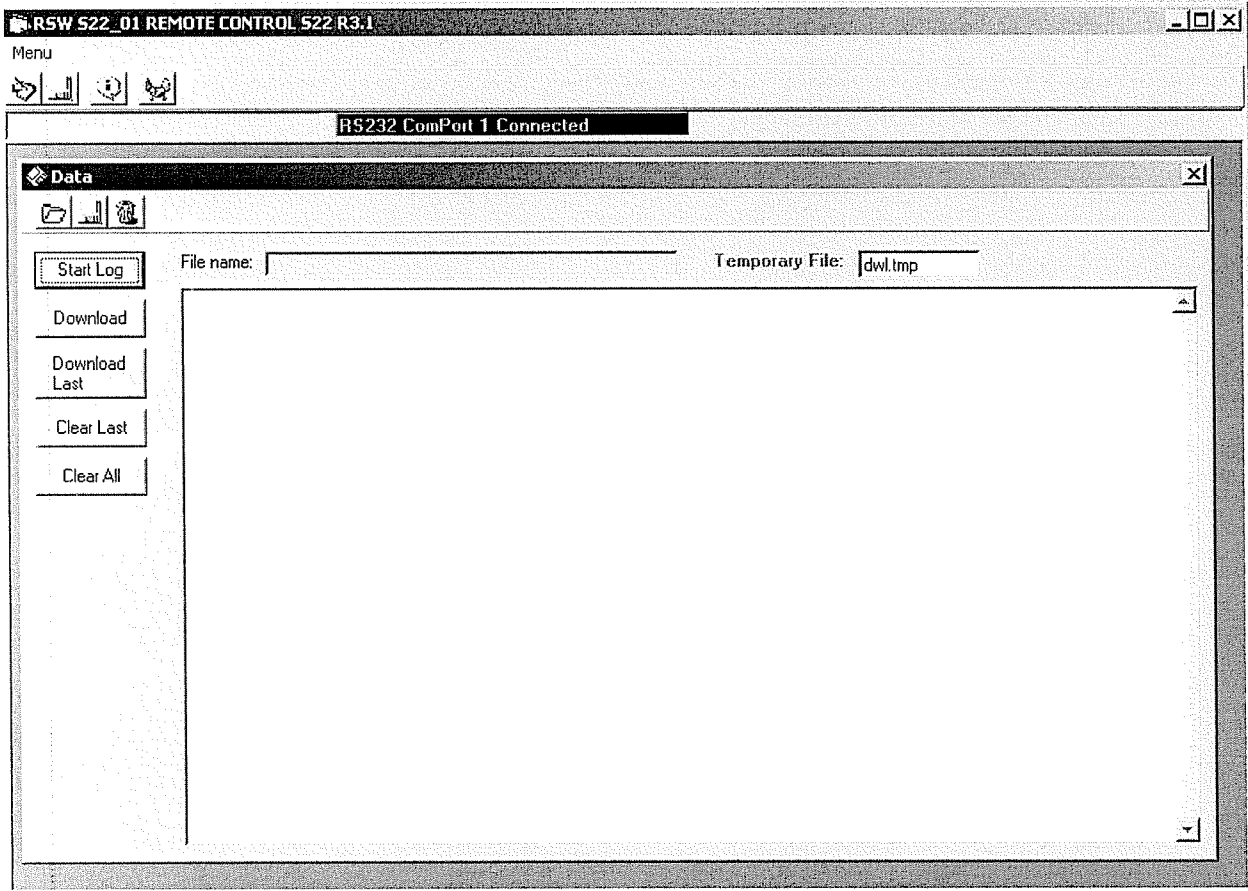


Figure 9: Download

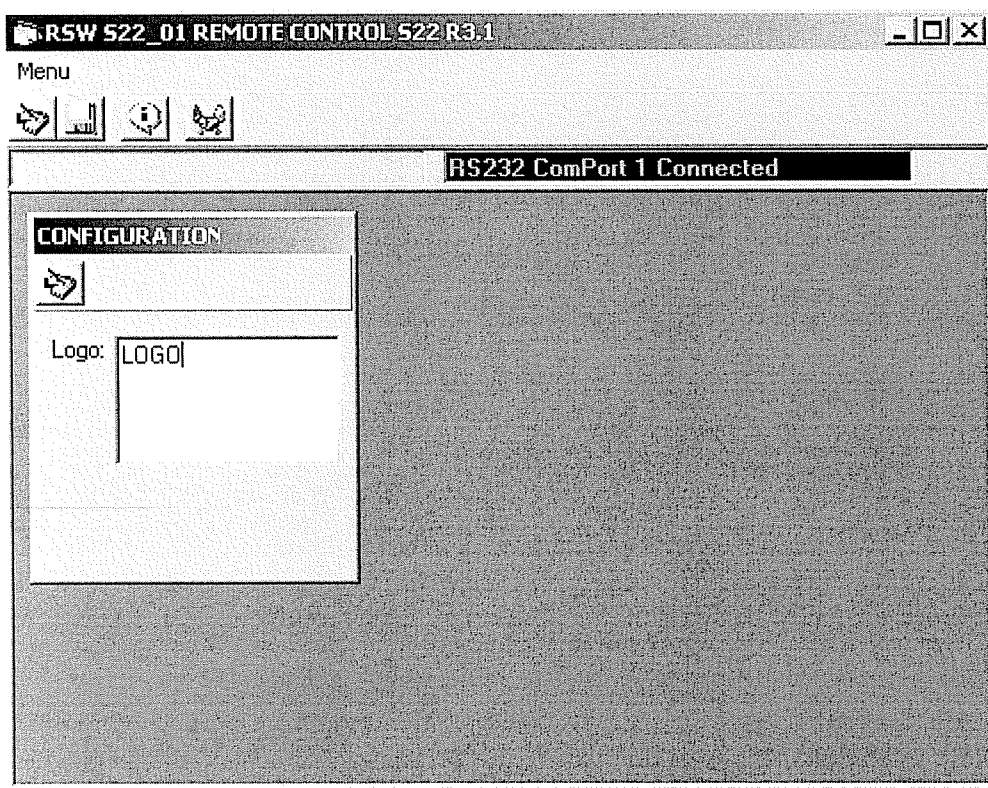


Figure 10: Logo setting

7. INSTRUMENT CONFIGURATION

This section makes it possible to set the instrument logo.

Logo confirmation takes place when *enter* is pressed on the PC keyboard.

To display the logo contained in the instrument memory click on the related tab on the command bar (see Figure 10).

8. CLOSING WINDOWS

To get out of a sub programme or a main programme open *Menu*, then select *Exit* (see Figure 11).

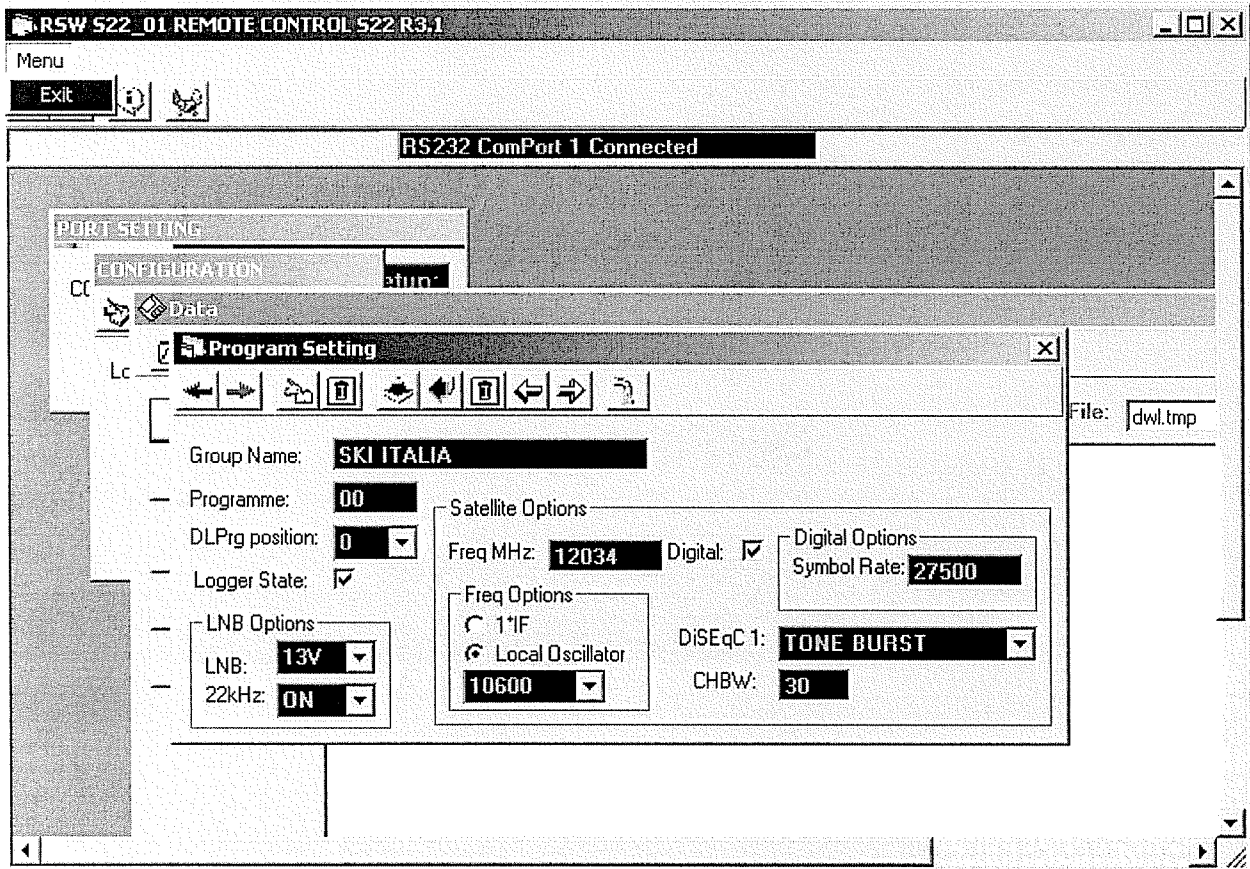


Figure 11: Closing of windows

9. APPENDIX: LIST OF FIGURES

Figure 1: Setup	3
Figure 2: Selection of destination directory	3
Figure 3: Program group selection	4
Figure 4: Bar for installation status	4
Figure 5: Successful installation	4
Figure 6: Main display	5
Figure 7: Serial port setting	6
Figure 8: Program Setup	7
Figure 9: Download	8
Figure 10: Logo setting	8
Figure 11: Closing of windows	9